

Year 1 Soil Sampling

Matt Davis

Texas Cattle Feeders Association

Wheeler County Down Gradient Mapping



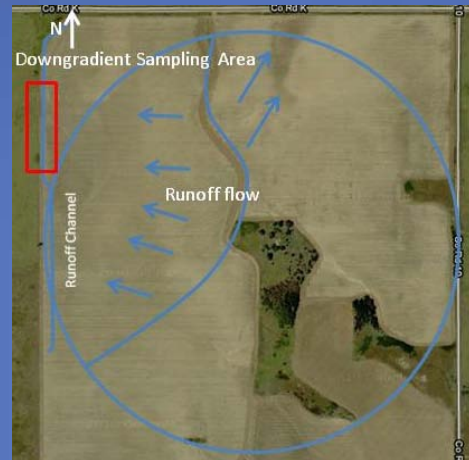
Wheeler County Down Gradient Layout



Wheeler County Down Gradient Layout

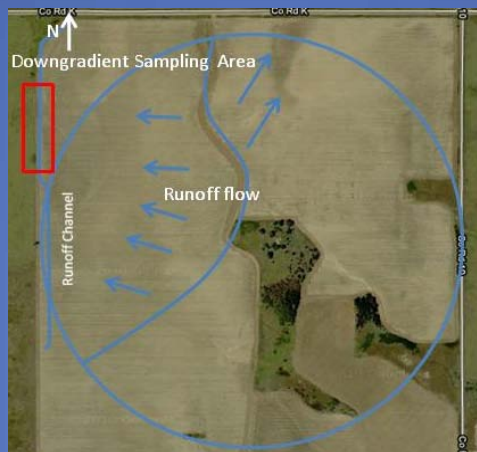


Wheeler County Garland Moore Circle Soil Samples 0-6"



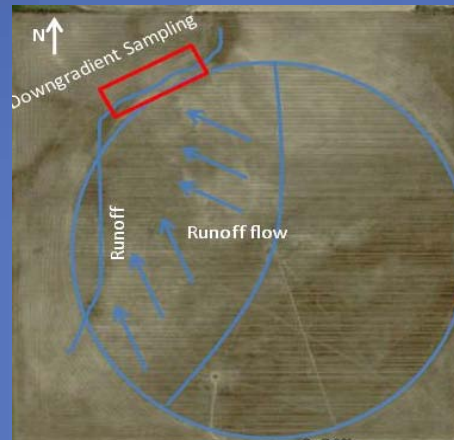
Dec. 2010	pH	Sol. Salt (mmho/cm)	% O.M.	N (ppm)	P (ppm)	K (ppm)	S (ppm)	Ca (ppm)	Mg (ppm)	Na (ppm)
Whole Field	6.7	0.13	0.3	7	52	176	10	1037	144	17
Subarea	6.8	0.13	0.4	5	54	180	9	1303	196	19
Down 1	6.7	0.10	0.3	8	46	152	5	803	126	9
Down 2	7.1	0.18	1.2	14	112	307	8	1292	209	10

Wheeler County Garland Moore Circle Soil Samples 6-24"



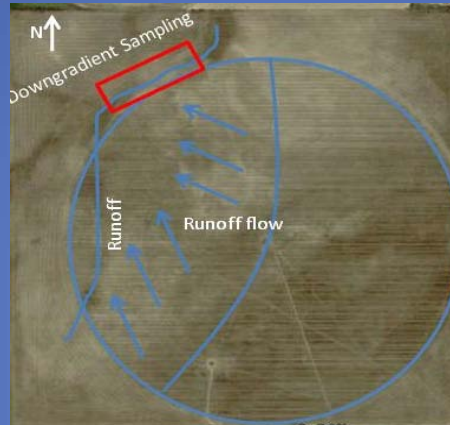
Dec. 2010	pH	Sol. Salt (mmho/cm)	% O.M.	N (ppm)	P (ppm)	K (ppm)	S (ppm)	Ca (ppm)	Mg (ppm)	Na (ppm)
Subarea	7.1	0.16	0.4	7	29	127	7	1415	194	16
Down 1	6.6	0.11	0.3	8	30	150	7	798	165	9
Down 2	6.6	0.20	0.2	12	65	400	11	1967	324	23

Wheeler County Sandifer Circle Soil Samples 0-6"



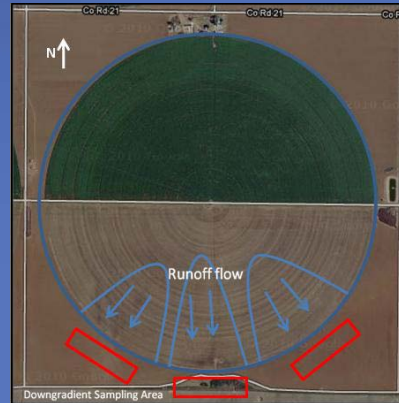
Dec. 2010	pH	Sol. Salt (mmho/cm)	% O.M.	N (ppm)	P (ppm)	K (ppm)	S (ppm)	Ca (ppm)	Mg (ppm)	Na (ppm)
Whole Field	5.7	<.05	0.4	2	30	76	4	555	55	13
Subarea	6.0	<.05	0.4	2	27	67	32	543	53	14
Down 1	5.4	<.05	<.02	2	60	60	3	297	38	9
Down 2	5.3	<.05	<.02	3	65	65	1	140	22	10

Wheeler County Sandifer Circle Soil Samples 6-24"



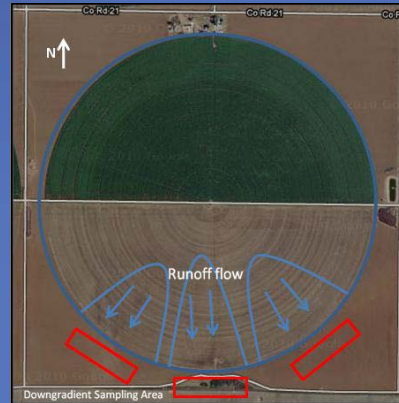
Dec. 2010	pH	Sol. Salt (mmho/cm)	% O.M.	N (ppm)	P (ppm)	K (ppm)	S (ppm)	Ca (ppm)	Mg (ppm)	Na (ppm)
Subarea	6.6	0.07	<.02	3	23	77	3	718	79	10
Down 1	6.2	0.06	<.02	4	26	60	2	491	71	9
Down 2	5.7	<.05	<.02	4	38	51	2	253	44	11

Deaf Smith County CJM 94 Soil Samples 0-6"



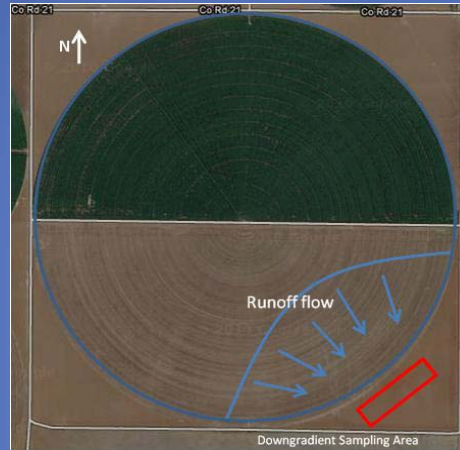
Dec. 2010	pH	Sol. Salt (mmho/cm)	% O.M.	N (ppm)	P (ppm)	K (ppm)	S (ppm)	Ca (ppm)	Mg (ppm)	Na (ppm)
Whole Field	7.9	0.39	1.7	28	87	631	16	2559	706	127
SW Subarea	8.4	0.42	1.2	20	97	497	21	4488	692	192
SW Down 1	8.3	0.28	0.9	11	30	474	11	4921	471	47
SW Down 2	8.2	0.32	0.9	19	26	487	8	5077	491	38
SE Subarea	8.5	0.39	1.0	14	60	493	20	4776	751	227
SE Down 1	8.4	0.28	0.6	13	15	372	6	4419	593	48
SE Down 2	8.4	0.27	0.8	13	16	442	5	4564	643	42

Deaf Smith County CJM 94 Soil Samples 6-24"



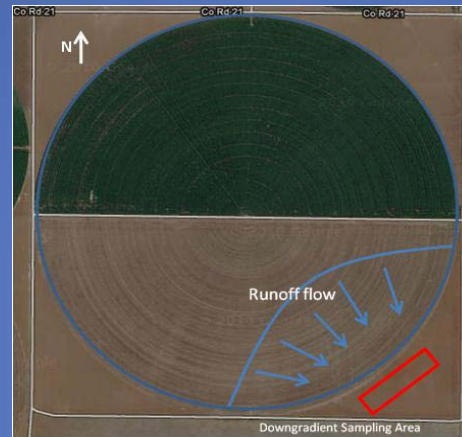
Dec. 2010	pH	Sol. Salt (mmho/cm)	% O.M.	N (ppm)	P (ppm)	K (ppm)	S (ppm)	Ca (ppm)	Mg (ppm)	Na (ppm)
SW Subarea	8.5	0.45	1.3	20	54	437	27	5038	723	222
SW Down 1	8.4	0.29	1.2	13	32	494	8	5245	485	51
SW Down 2	8.2	0.34	1.4	17	29	499	8	4921	501	42
SE Subarea	8.6	0.36	0.8	7	48	368	20	4813	731	209
SE Down 1	8.4	0.30	0.8	14	16	455	6	4805	699	60
SE Down 2	8.4	0.29	1.0	15	18	478	5	4294	644	43

Deaf Smith County CJM 4 Soil Samples 0-6"



Dec. 2010	pH	Sol. Salt (mmho/cm)	% O.M.	N (ppm)	P (ppm)	K (ppm)	S (ppm)	Ca (ppm)	Mg (ppm)	Na (ppm)
Whole Field	7.9	0.38	1.7	27	129	747	15	2511	748	132
Subarea	8.3	0.38	1.4	23	74	588	13	3306	705	125
Down 1	8.2	0.34	0.9	21	38	506	7	4227	617	49
Down 2	8.1	0.34	0.7	26	26	448	6	3918	575	29

Deaf Smith County CJM 4 Soil Samples 6-24"



Dec. 2010	pH	Sol. Salt (mmho/cm)	% O.M.	N (ppm)	P (ppm)	K (ppm)	S (ppm)	Ca (ppm)	Mg (ppm)	Na (ppm)
Subarea	8.3	0.38	1.3	19	74	575	11	3948	705	109
Down 1	8.4	0.33	0.8	19	50	547	8	5030	628	47
Down 2	8.2	0.34	0.9	22	31	441	11	5201	582	36

Deaf Smith County CJM 25 Soil Samples 0-6"



Dec. 2010	pH	Sol. Salt (mmho/cm)	% O.M.	N (ppm)	P (ppm)	K (ppm)	S (ppm)	Ca (ppm)	Mg (ppm)	Na (ppm)
Runoff Area 1	8.3	0.46	1.7	23	89	326	20	4522	410	117
Runoff Area 2	8.2	0.57	1.4	50	137	497	28	4729	482	182
Runoff Area 3	8.2	0.55	2.5	45	116	510	26	4651	473	135
Runoff Area 4	8.2	0.54	2.1	48	72	495	28	4674	470	138

Deaf Smith County CJM 25 Soil Samples 6-24"



Dec. 2010	pH	Sol. Salt (mmho/cm)	% O.M.	N (ppm)	P (ppm)	K (ppm)	S (ppm)	Ca (ppm)	Mg (ppm)	Na (ppm)
Runoff Area 1	8.2	0.39	0.9	18	6	264	27	4640	387	125
Runoff Area 2	8.3	0.39	0.7	22	7	259	28	4772	377	157
Runoff Area 3	8.3	0.42	1.9	23	4	267	32	4628	396	136
Runoff Area 4	8.4	0.42	1.1	31	7	312	32	4726	399	152



